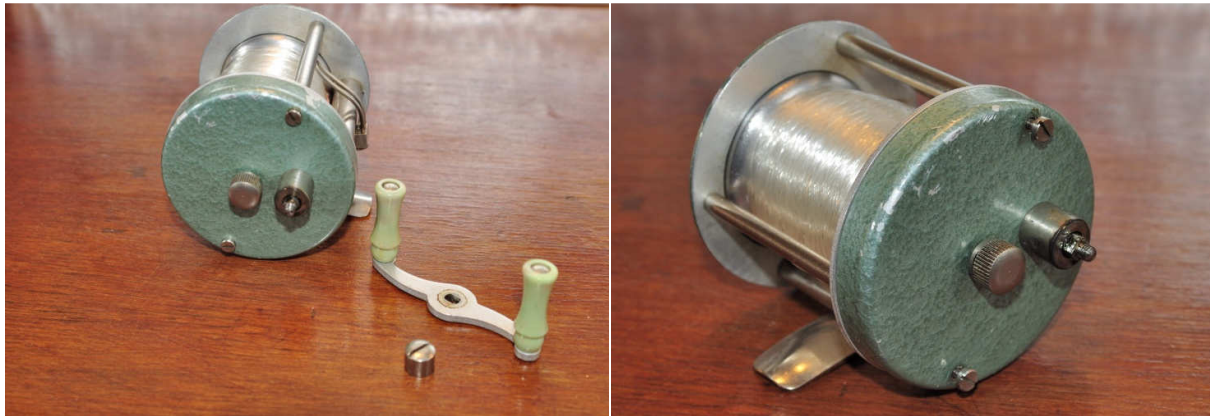


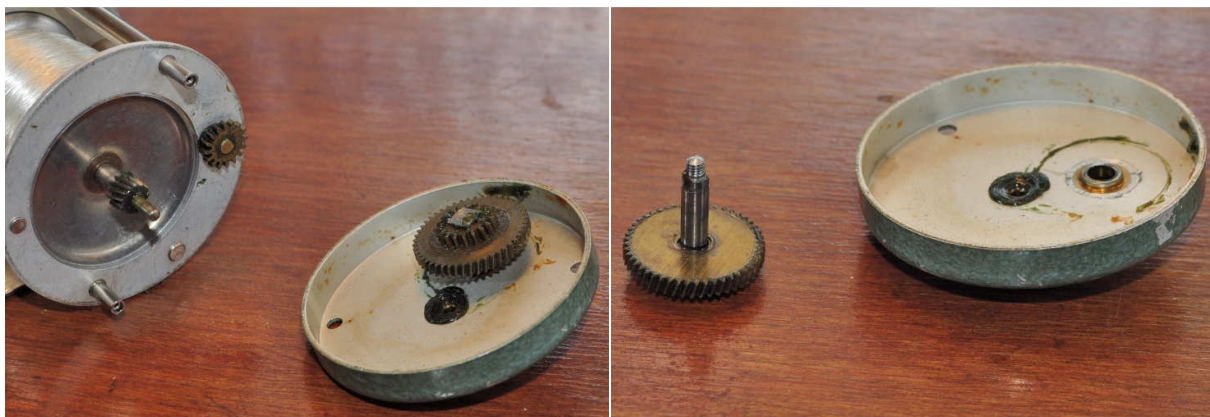
Record 1300 service guide



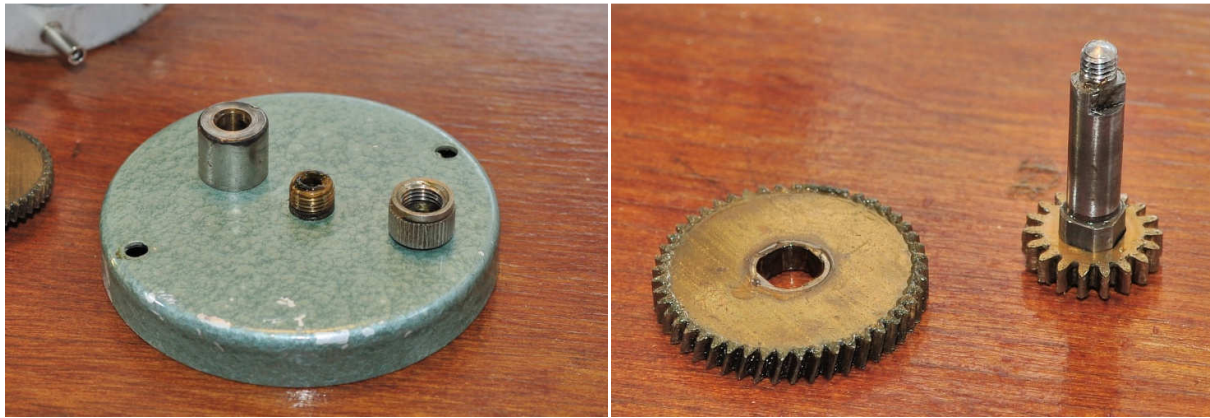
This is a very simple reel to service with very few moving parts. Start by removing the handle nut and handle.



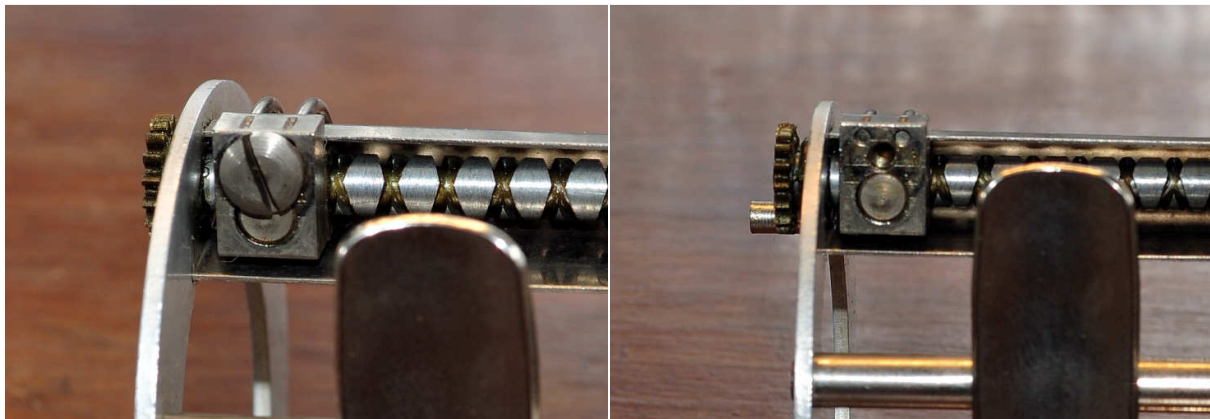
Undo the two pillar screws holding on the right side plate.



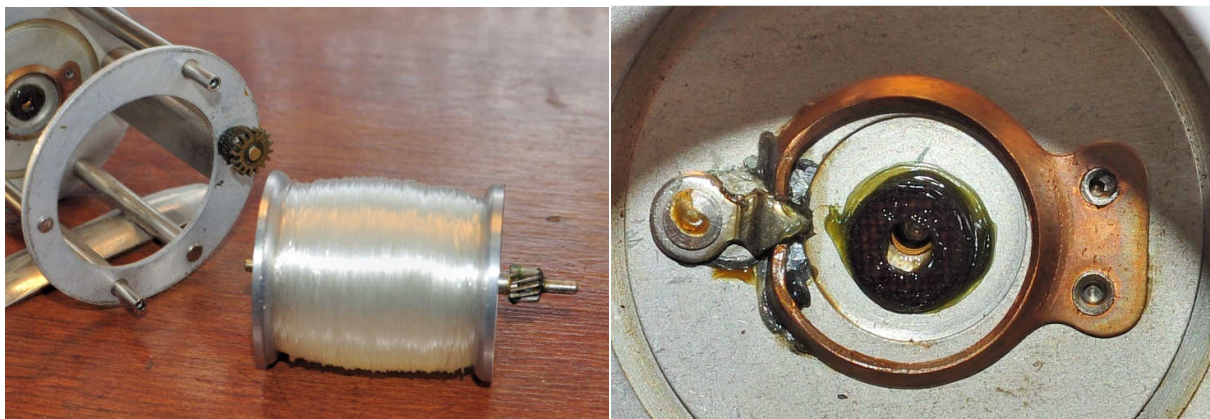
Remove the plate from the frame and remove the main gear from the side plate, it simply lifts out.



At this point you can remove the spool cap and add a drop of oil. The main gear separates from the shaft, the gear at the base of the shaft turns the level wind worm gear.



The level wind assembly comes apart in typical ABU fashion; undo the screw at the base of the line carriage and remove the pawl.



The worm gear can then be removed from the side of the frame. Removing the spool from the frame gives access to the clicker on the left side plate. Note the washer that sits between the spool and the left side plate (covered in grease here).

Before reassembly give everything a thorough clean, an old toothbrush and some warm water with a drop of washing up liquid should be fine. Make sure that everything is dry and then lubricate before reassembly. The left spool cap does cannot be removed so place a drop of oil in it before reinstalling the spool.

Apply a light grease to the gear teeth and all other friction surfaces get a light coat of oil. Don't forget to lightly grease all screw threads to prevent any seized screws in the future.



©Tim Parratt 2011