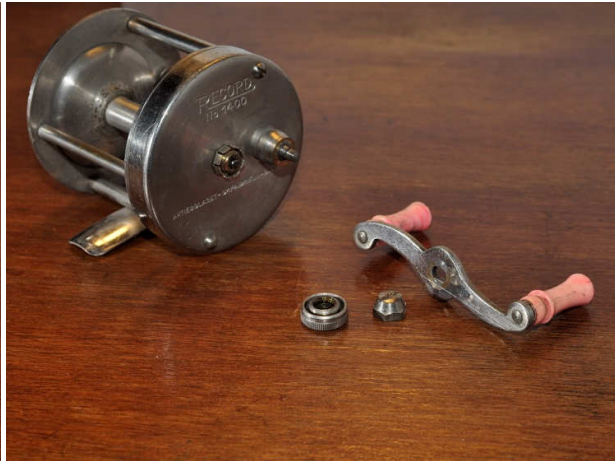
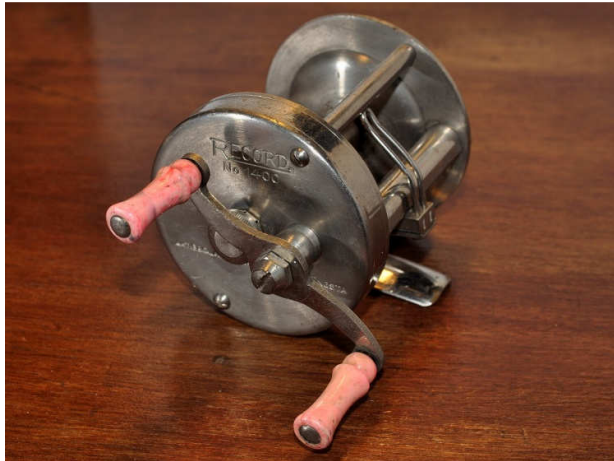


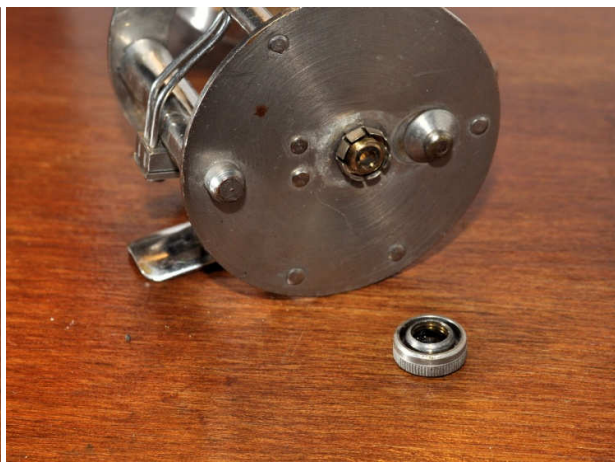
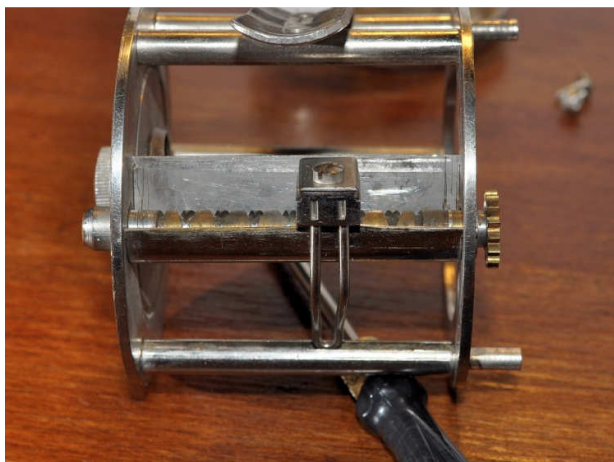
Record 1400 service guide



Start by removing the handle nut and handle. Remove the spool cap and add a drop of oil to the felt.

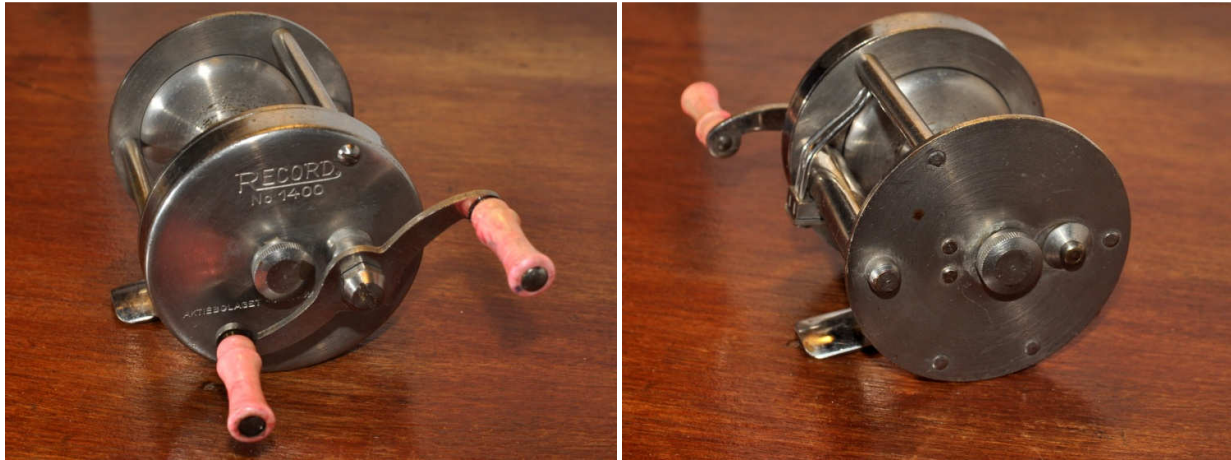


Undo the two pillar screws and remove the right hand side plate. The main gear simply lifts out of the side plate.



The level wind assembly is removed in typical ABU fashion; remove the screw and cover on the line carriage and then remove the pawl. The worm gear can then be removed from the side of the frame. Unscrew the spool cap on the left side plate and add a drop of oil.

On reassembly add a light grease to the teeth on the gears and for all other friction surfaces use a light oil sparingly. Don't forget to grease the threads on all the screws. This will prevent any screws seizing up.



Very nice clean looking reel although I'm not too sure about the pink handles.

©Tim Parratt 2011