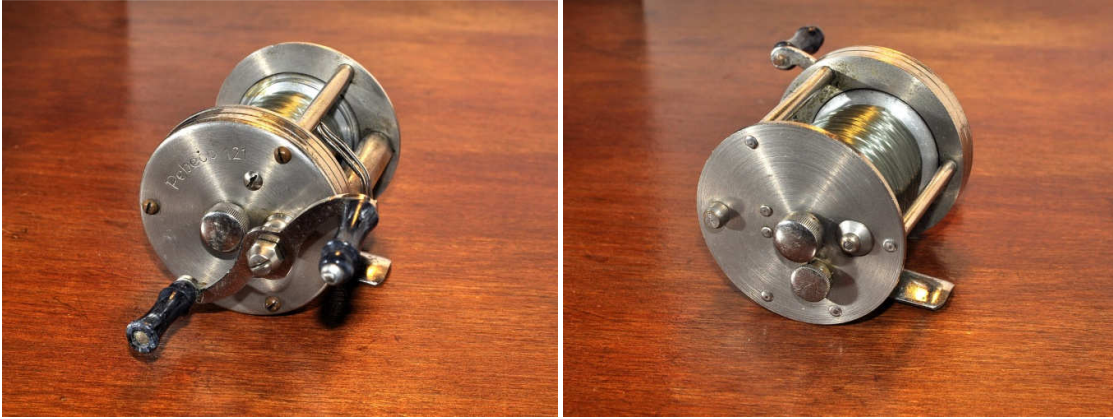


## Pebeco 121 service guide



The Pebeco 121 was produced by AB Urfabriken and for all intents and purposes it's a Record 1550 with a different name. On the left hand side plate there is a cast control knob (below the spool knob) that varies the pressure of a piece of felt on the side of the spool. This particular model is in nice condition considering the age (early 1940s), although it looks as if someone has repaired one of the plastic handles and inadvertently riveted it on back to front.



Start by removing the handle and then remove the four pillar screws holding the right side plate on to the frame, the spool can be removed from the frame.



The level wind assembly removes in typical ABU fashion; retaining clip on right side plate, screw to remove pawl, and the whole assembly being removed from the right side of the frame.



Three bridge screws hold the bridge assembly and gears in place on the right side plate; the gears simply lift off the bridge assembly.

Before reassembling give everything a thorough clean. It is highly unlikely that this reel will be used for fishing so use a light grease on the gears, and a light oil on other friction surfaces-lubricate sparingly. Don't forget to place a drop of oil in both spool caps and on the felt for the cast control on the left side plate. Old reels such as these often have the tops of the screws rounded off by people using the wrong size screwdrivers-a light coat of grease on all the screws' threads will prevent any screws sticking in the future and help reduce any further damage.



These old reels are incredibly easy to work on with very few moving parts. There's no reason why your display reels can't be cleaned up to work as well as they look.

©Tim Parratt 2011