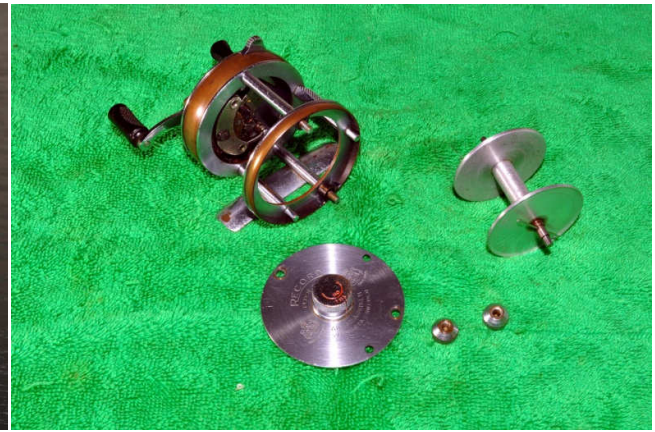


Record Flyer 3000 service



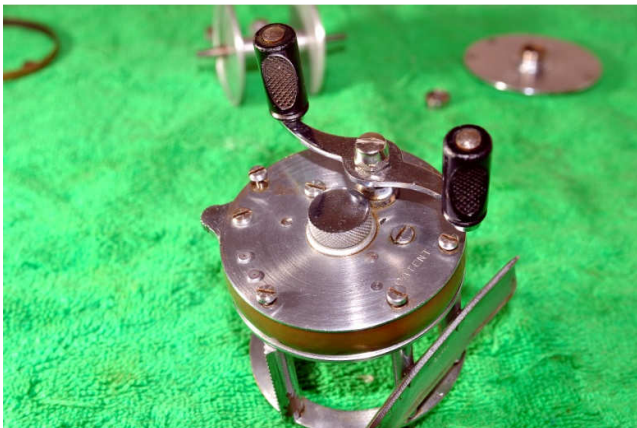
Servicing this reel seems to be similar (if not the same!) as the Record Flyer 3000 Modell C. I have briefly touched on disassembling the right side plate in this guide but please refer to the guide for the Modell C for more detail if needed.

Unscrew the two thumb nuts and remove the side plate and spool. Note that this reel is missing the centrifugal brakes.

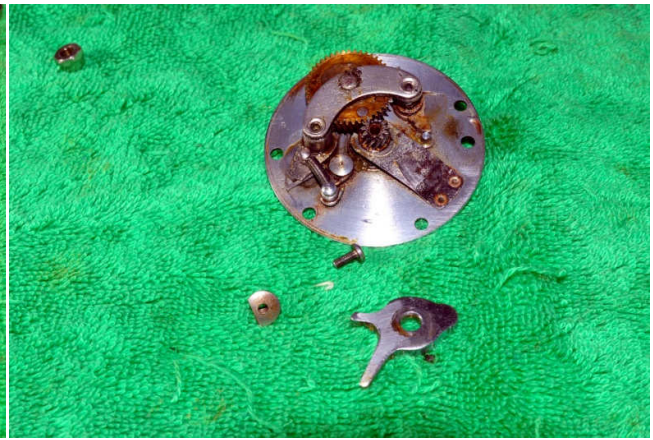
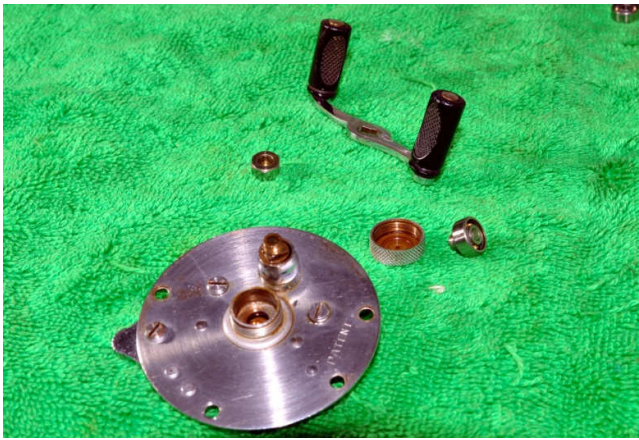


Unscrew the spool cap and remove the bearing shim and the bearing. Give the bearing a thorough clean by soaking in shellite/lighter fuel. When clean and dry add a couple of drops of oil of your choice.

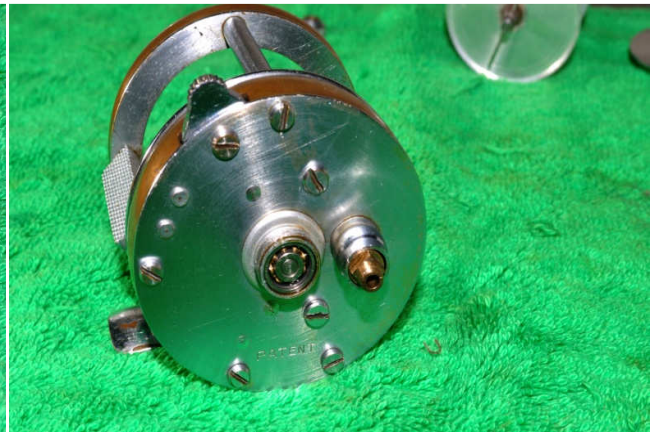
Remove the washers from the spool cap and clean. Reassemble using a drop of oil. Replace the bearing in the side plate and add a thin smear of grease to the threads for the spool cap. Replace the spool cap on the side plate.



Remove the four post screws and then remove the entire right side plate assembly.



Remove the handle nut and handle, and the spool cap and bearing. Give the bearing a thorough clean (same as the left side plate bearing). Undo the screw and nut holding on the thumb release. At this stage remove the two bridge screws and carefully unhook the anti-reverse spring from the post on the brake plate. Remove the entire main gear assembly from the brake plate and give everything a thorough clean.



On reassembly apply a light coat of grease to all friction surfaces where there is metal-metal contact. The exception is to the main shaft-apply oil to where it contacts the side plate. Reattach the side plate to the frame and replace the bearing in the plate. Lightly grease the threads for the spool cap. Replace the spool cap (add a drop of oil), and handle and handle nut.



Add some oil to the spool shaft where it contacts the pinion gear and also to both ends where they contact the bearings (to stop them seizing in place as was the case in the Modell C). Replace the spool in the frame and then reattach the left side plate. Using the spool caps centre the spool in the frame so that there is slight side to side 'knock' when in free spool. All done!