

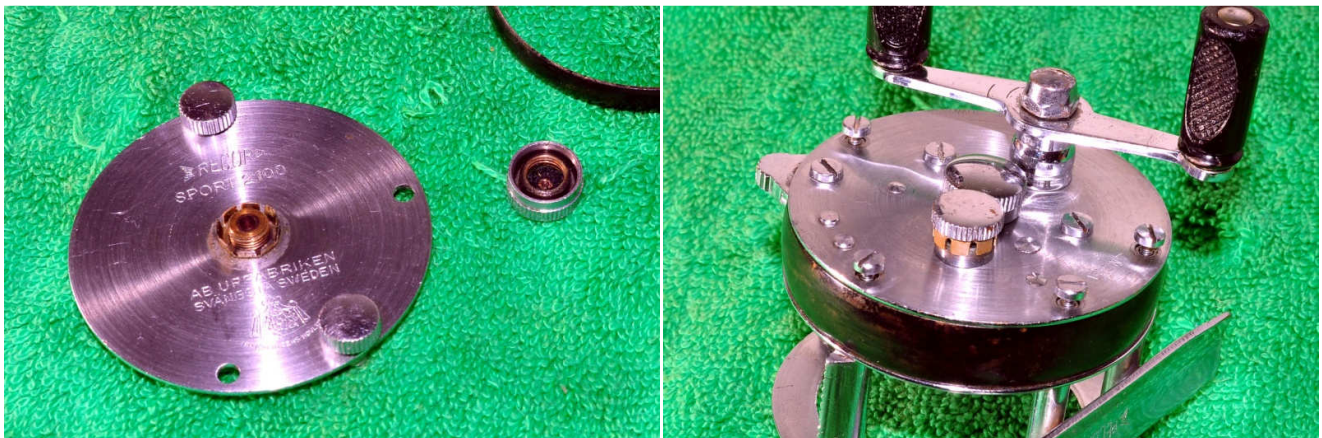
## Record Sport 2100 service



This reel seems to be working fine although the spool is showing some corrosion and salt deposits. The red colour could be colour bleeding from old dacron line.

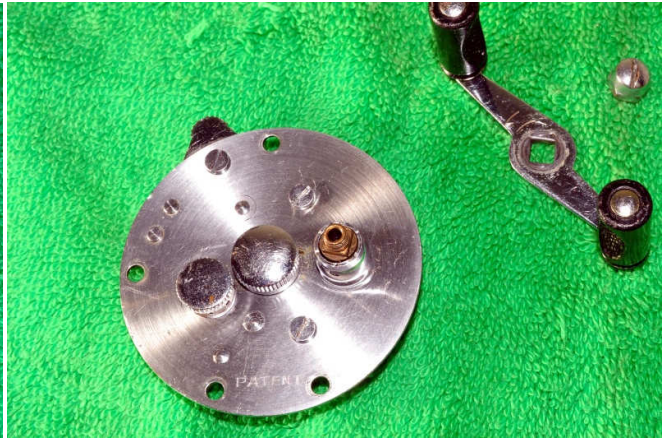
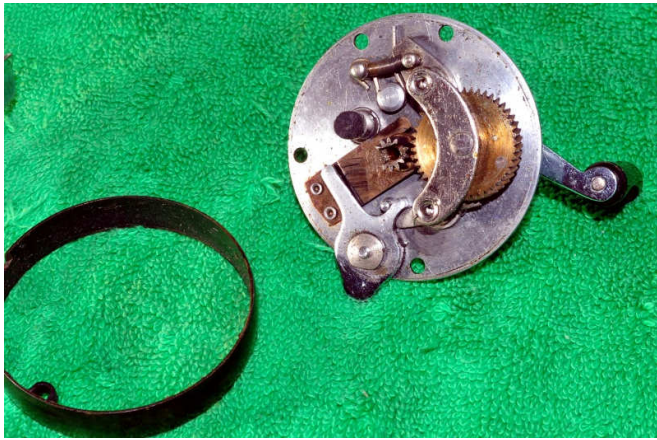


Start by undoing the two thumb screws on the left side plate. Remove the side plate and the plate spacer. The spool can be removed from the frame. Take care not to lose the centrifugal brakes.

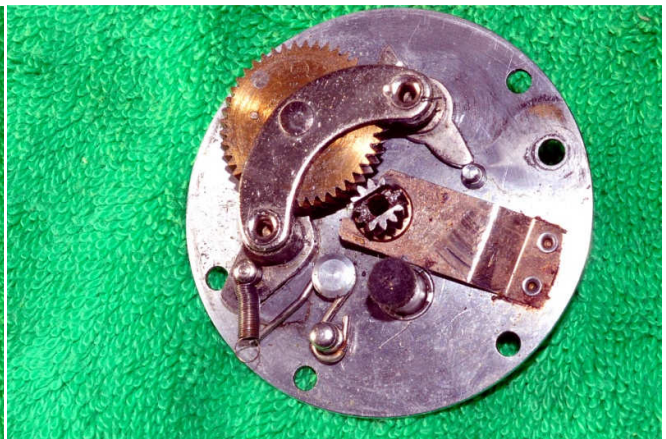
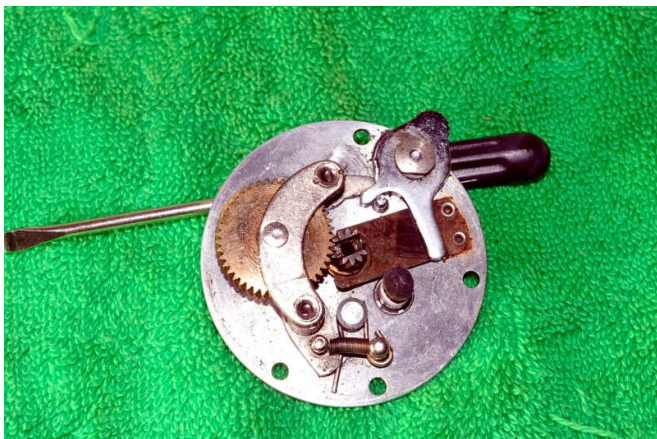


Remove the spool cap. There is a felt washer in it. Carefully remove this and soak in shellite/lighter fuel to remove any dirt. When it is clean and dry replace it in the spool cap and add a couple of drops of light oil. Apply a thin coat of light grease to the threads in the spool cap.

Remove the four pillar screws on the right side plate.

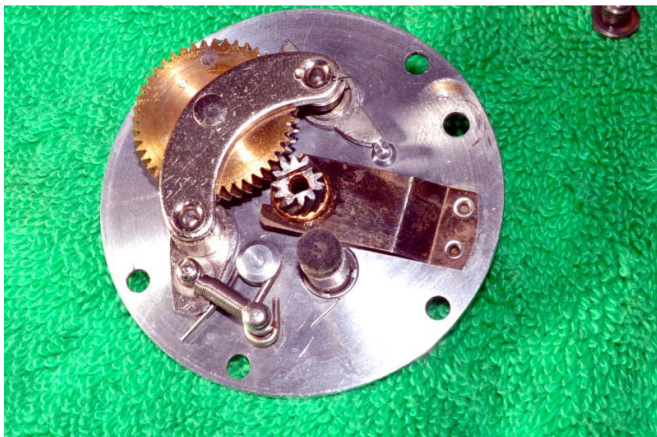


Lift off the whole side plate assembly and black spacer from the frame. Remove the handle nut and handle. Remove the right spool cap and clean it in the same fashion as the left cap. Note that there is another knob/cap on the side plate.

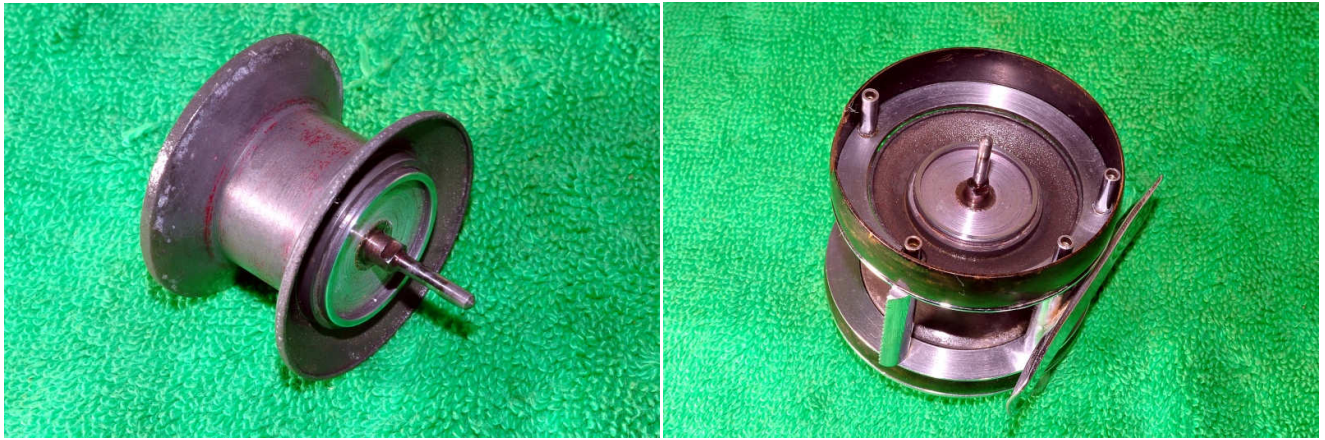


This cap adjusts the height of the felt washer (to the lower right of the pinion gear in the photo). This felt washer rubs against the side of the spool. This could be a casting control (although the reel does have centrifugal brakes) or perhaps a type of drag mechanism.

Remove the screw and nut for the freespool lever and remove the lever. Unhook the spring for the anti reverse dog from the post on the frame. The whole gear bridge assembly can then be removed and thoroughly cleaned before reassembly. Use oil on the shaft of the main gear and a light grease on all other friction surfaces (note where there is moving metal to metal contact).



Ensure that the gear teeth have a light coat of grease. Replace the free spool lever and fix in place with the screw and nut. Replace the left side plate and spacer on the frame and then replace the left spool cap.



The spool has cleaned up nicely with some warm water and an old toothbrush. Add a drop of oil to the shaft at both ends and also where it contacts the pinion gear. Make sure that the centrifugal brakes are pushed in before replacing it in the frame. Note the metal ring on the spool where the felt washer contacts. This ring was not present in the ABU Sport 2100.

Replace the right side plate spacer and then replace the right side plate. Reaffix the handle and handle nut.



A very solid little reel and simple to service-it shouldn't take long.

© Tim Parratt 2009

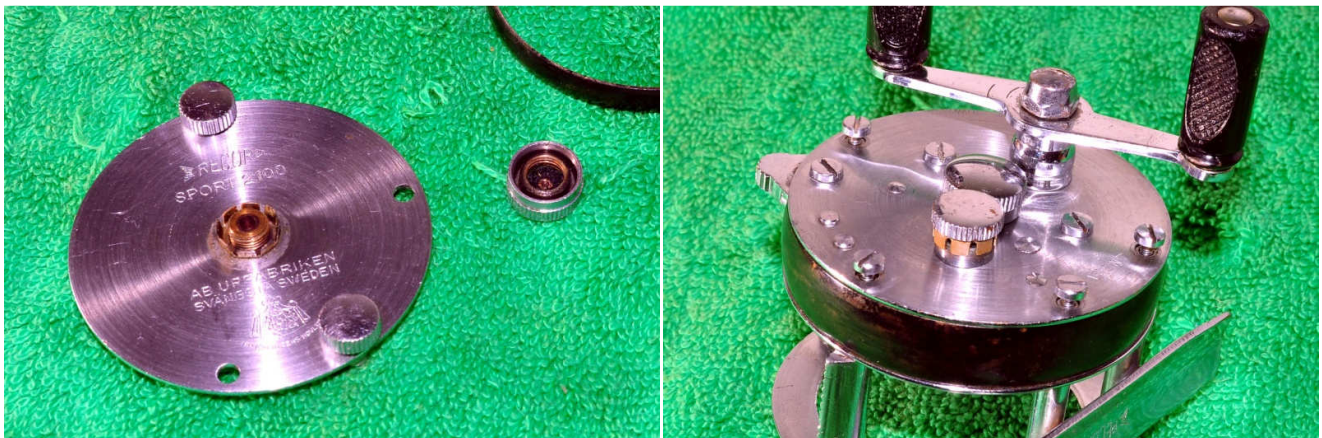
## Record Sport 2100 service



This reel seems to be working fine although the spool is showing some corrosion and salt deposits. The red colour could be colour bleeding from old dacron line.

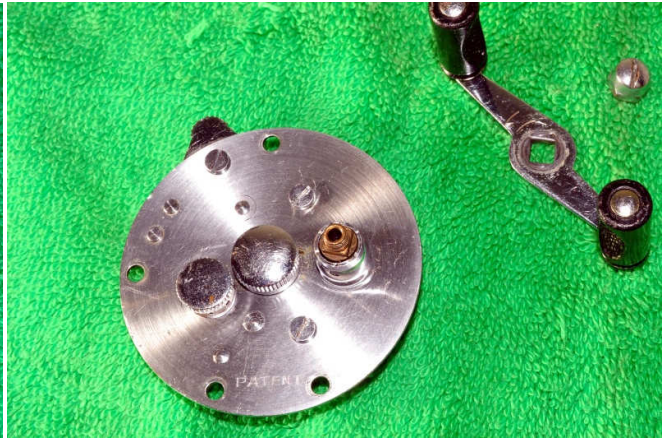
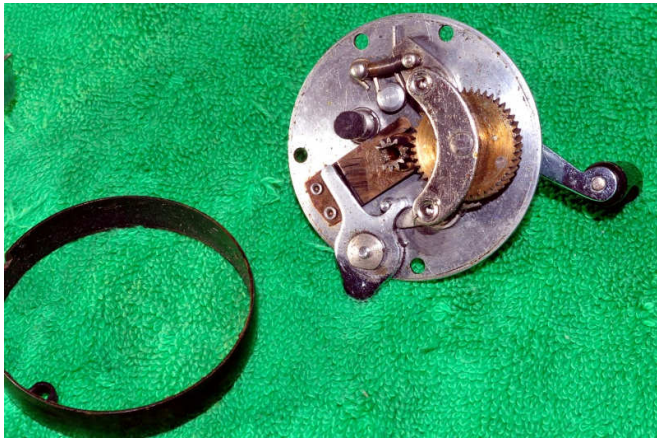


Start by undoing the two thumb screws on the left side plate. Remove the side plate and the plate spacer. The spool can be removed from the frame. Take care not to lose the centrifugal brakes.

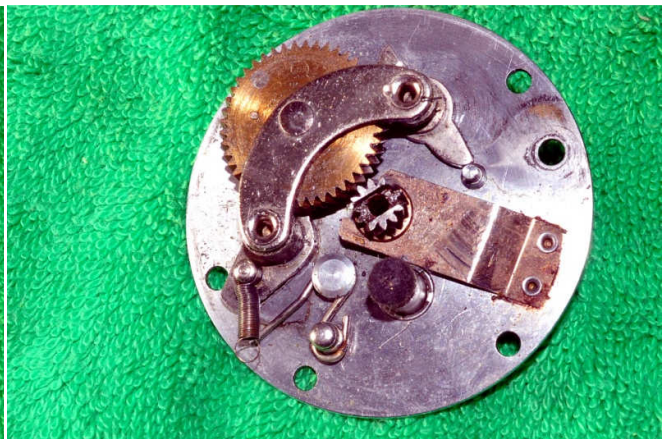
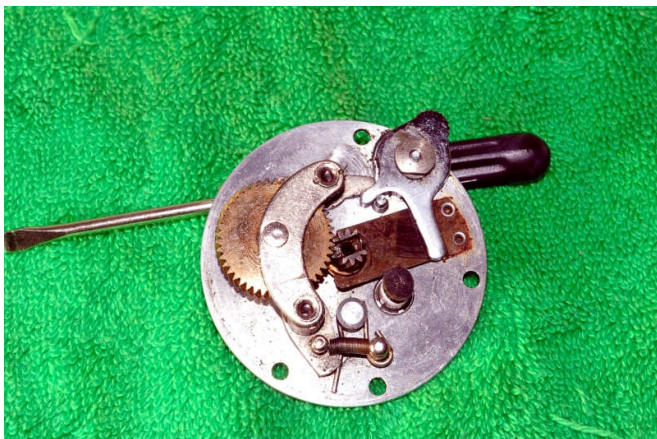


Remove the spool cap. There is a felt washer in it. Carefully remove this and soak in shellite/lighter fuel to remove any dirt. When it is clean and dry replace it in the spool cap and add a couple of drops of light oil. Apply a thin coat of light grease to the threads in the spool cap.

Remove the four pillar screws on the right side plate.

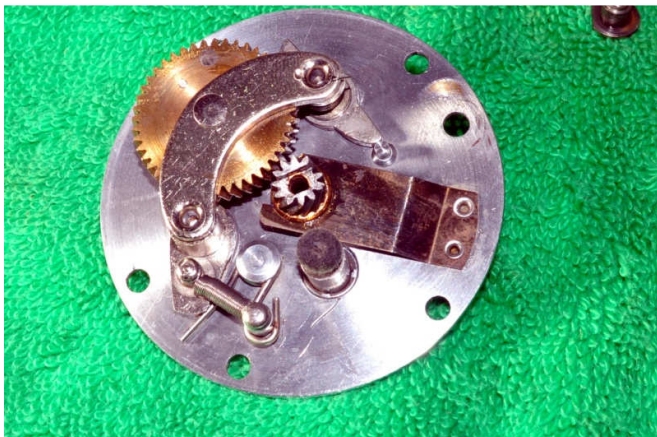


Lift off the whole side plate assembly and black spacer from the frame. Remove the handle nut and handle. Remove the right spool cap and clean it in the same fashion as the left cap. Note that there is another knob/cap on the side plate.



This cap adjusts the height of the felt washer (to the lower right of the pinion gear in the photo). This felt washer rubs against the side of the spool. This could be a casting control (although the reel does have centrifugal brakes) or perhaps a type of drag mechanism.

Remove the screw and nut for the freespool lever and remove the lever. Unhook the spring for the anti reverse dog from the post on the frame. The whole gear bridge assembly can then be removed and thoroughly cleaned before reassembly. Use oil on the shaft of the main gear and a light grease on all other friction surfaces (note where there is moving metal to metal contact).



Ensure that the gear teeth have a light coat of grease. Replace the free spool lever and fix in place with the screw and nut. Replace the left side plate and spacer on the frame and then replace the left spool cap.



The spool has cleaned up nicely with some warm water and an old toothbrush. Add a drop of oil to the shaft at both ends and also where it contacts the pinion gear. Make sure that the centrifugal brakes are pushed in before replacing it in the frame. Note the metal ring on the spool where the felt washer contacts. This ring was not present in the ABU Sport 2100.

Replace the right side plate spacer and then replace the right side plate. Reaffix the handle and handle nut. Centre the spool in the frame with the spool caps-there should be a slight side to side movement.



A very solid little reel and simple to service-it shouldn't take long.

© Tim Parratt 2009